

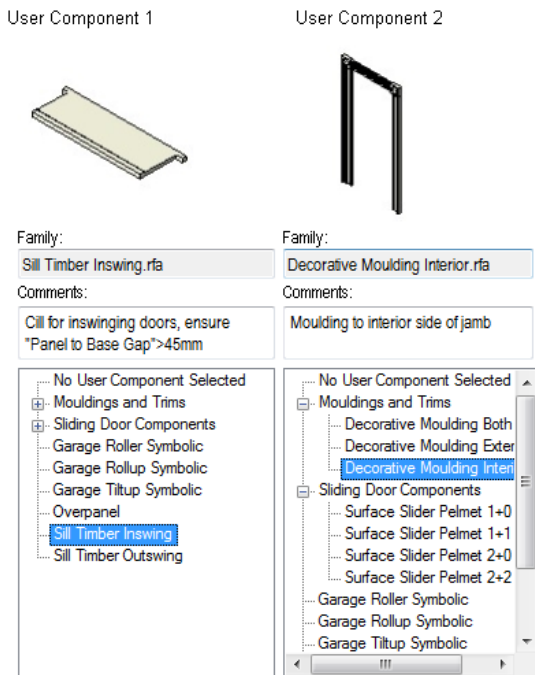
# RevitWorks Door Factory– New Features

Enhancements to the RevitWorks Door Factory

## New Features introduced for Revit 2017

### Sub-Directories

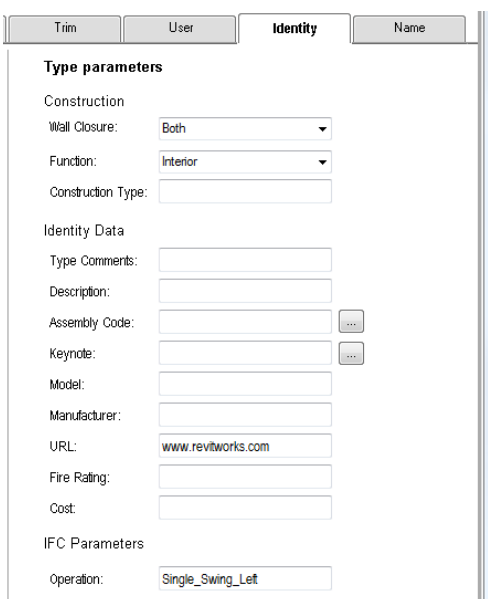
Users can now create subdirectories within the Handle and User component directory and they will show in the relevant Tabs (to allow for easier navigation and order during component selection)



### Identity data

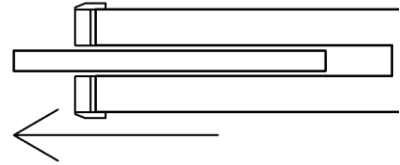
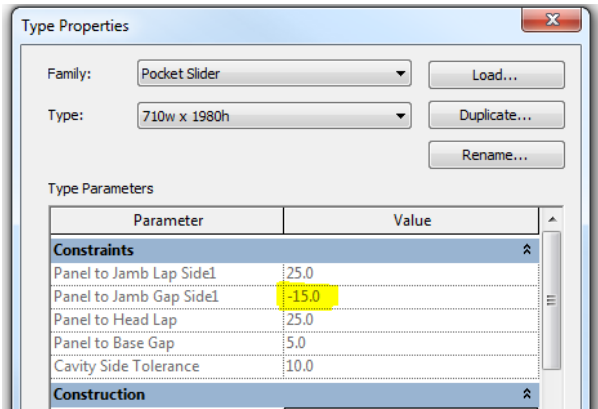
Assembly Codes and Keynotes can now be inputted within the Door Factory.

Identity tab re-designed to allow for larger viewing fields of parameter values.



## Panel to Jamb Gaps

Door Factory now accepts negative values for Panel to Jamb Gaps allowing for pocket sliders to pocket into its closing jamb.



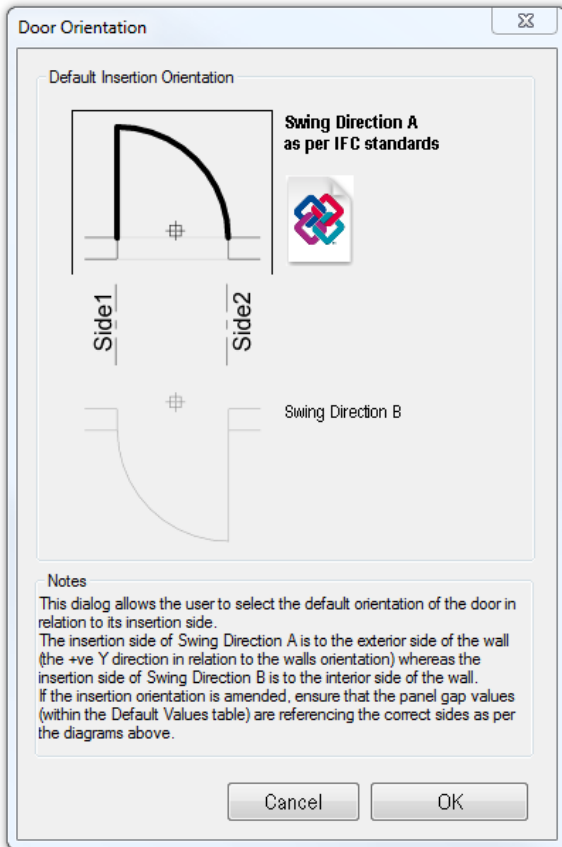
## New Features introduced for Revit 2016

### Default Door Orientation (build 16.2.3 onwards)

Default Orientation button added (under Default Settings dialog) allowing users to select the default orientation of the door in relation to its insertion side.

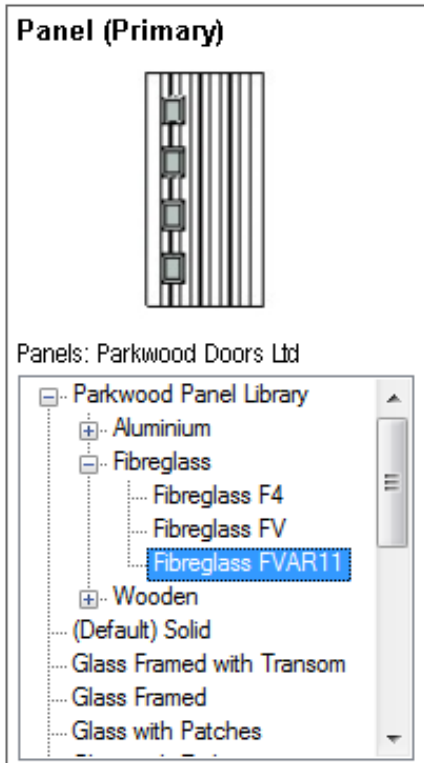
This defaults to the opposite of the traditional Door Factory door directions to follow IFC standards.

To change back to traditional Door Factory directions, select Swing Direction B.



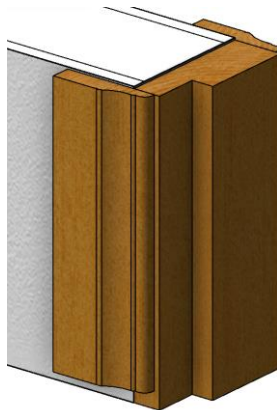
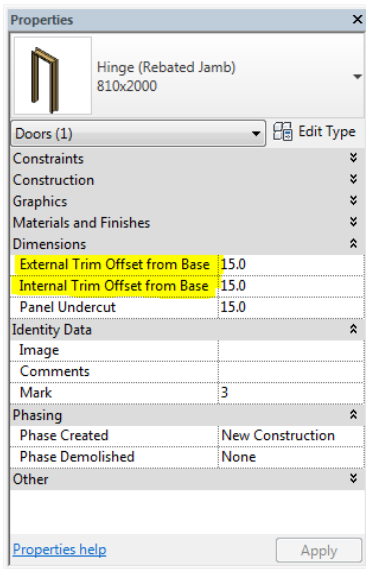
### Sub-Directories (build 16.2.3 onwards)

Users can now create subdirectories within the Panel directory and they will show in the Panel Tab.



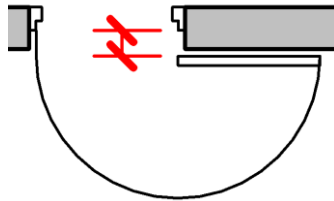
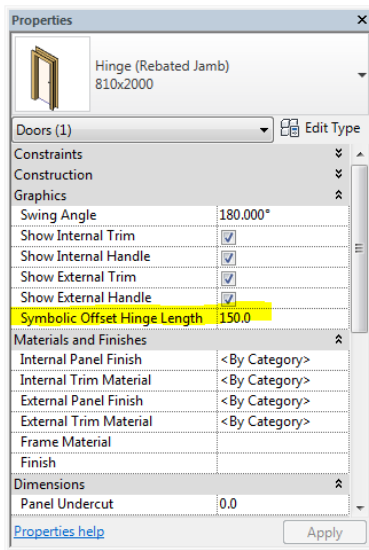
### Trim Base Offsets:

Trims can now be offset from the base of the door, allowing for floor finishes to continue under them.



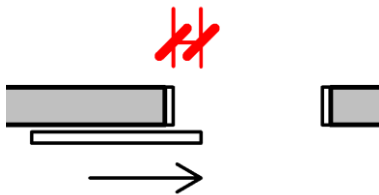
## Offset Hinges:

Single and double swing hinge doors plan swings can now have symbolic offset hinges; this allows for the swing representation in plans to be offset to suit deeper walls.



## Panel Protrusion into Opening:

'Panel Protrusion into Opening' parameter value (for sliding doors) is now editable from within the Door Factory Panel Tab:



Panel Width:	<input type="text" value="860"/>
Rough Width:	<input type="text" value="870"/>
<small>Rough width = Panel Width(s) + Tolerances + Jamb Width * 2</small>	
Panel Height:	<input type="text" value="1980"/>
Rough Height:	<input type="text" value="1990"/>
<small>Rough height = Panel Height + Tolerances + Jamb Width</small>	
<b>Panel Protrusion into Opening:</b>	<input type="text" value="100"/>

## Family Sizes

Doors now go through a more rigorous process during their build to ensure their family sizes are as small as possible

## User Component Parameters

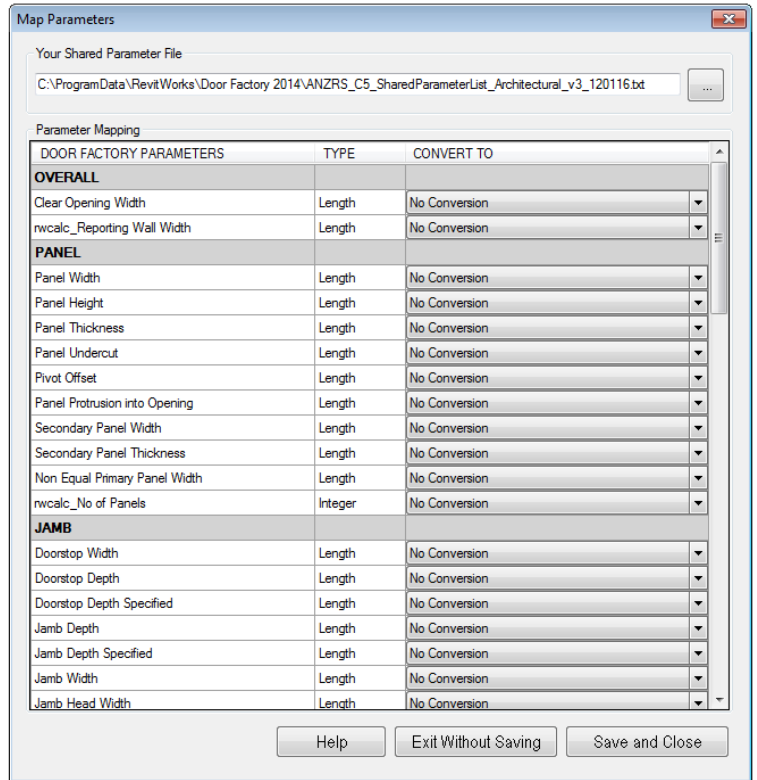
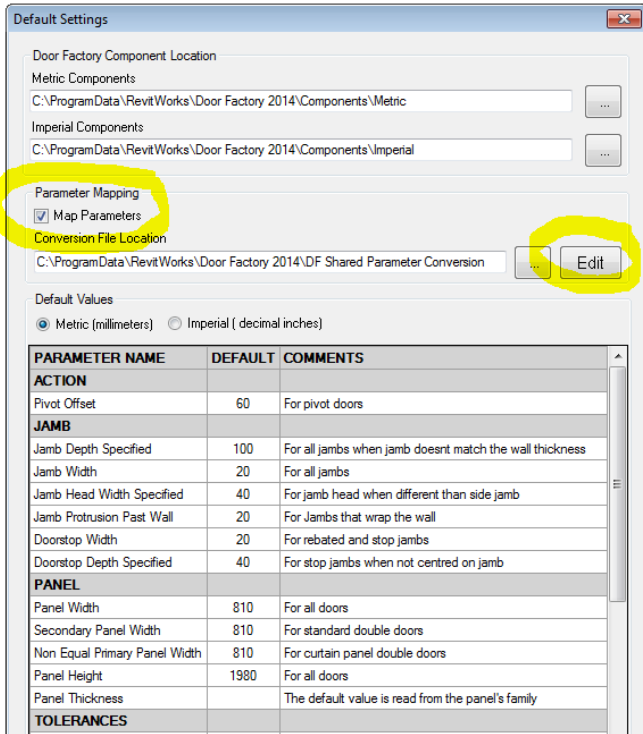
The following additional parameters are now linked through from within the User Components (if they exist), allowing for more versatility within the parametric components:

- Doorstop Width
- Panel Width
- Pivot Offset
- Panel Protrusion into Opening (for sliding doors)
- Panel to Panel Gap
- Secondary Panel Width

# New Features introduced for Revit 2015

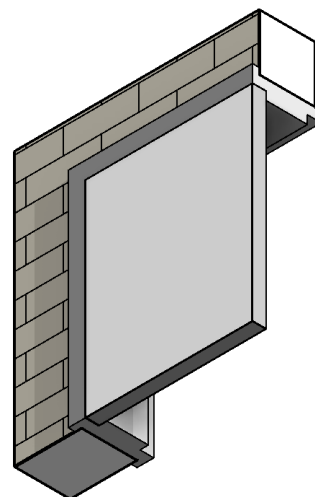
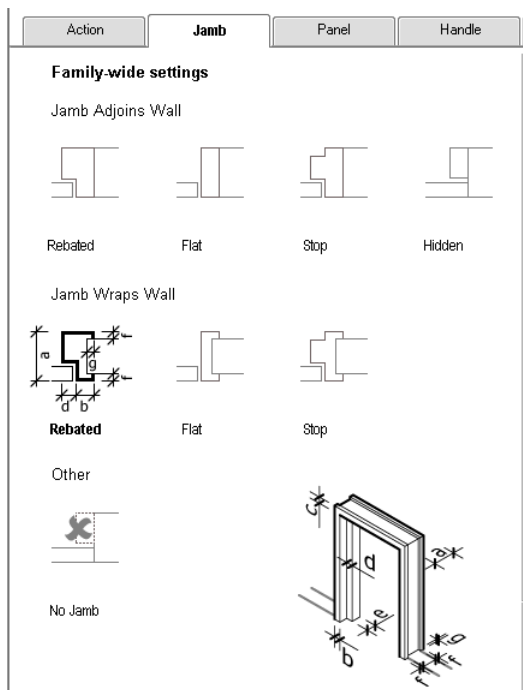
## Parameter Mapping:

The Door Factory now allows all Door Factory parameters to be converted to your shared parameter naming conventions during the Door Factory door creation process (under "Default Settings" dialog).



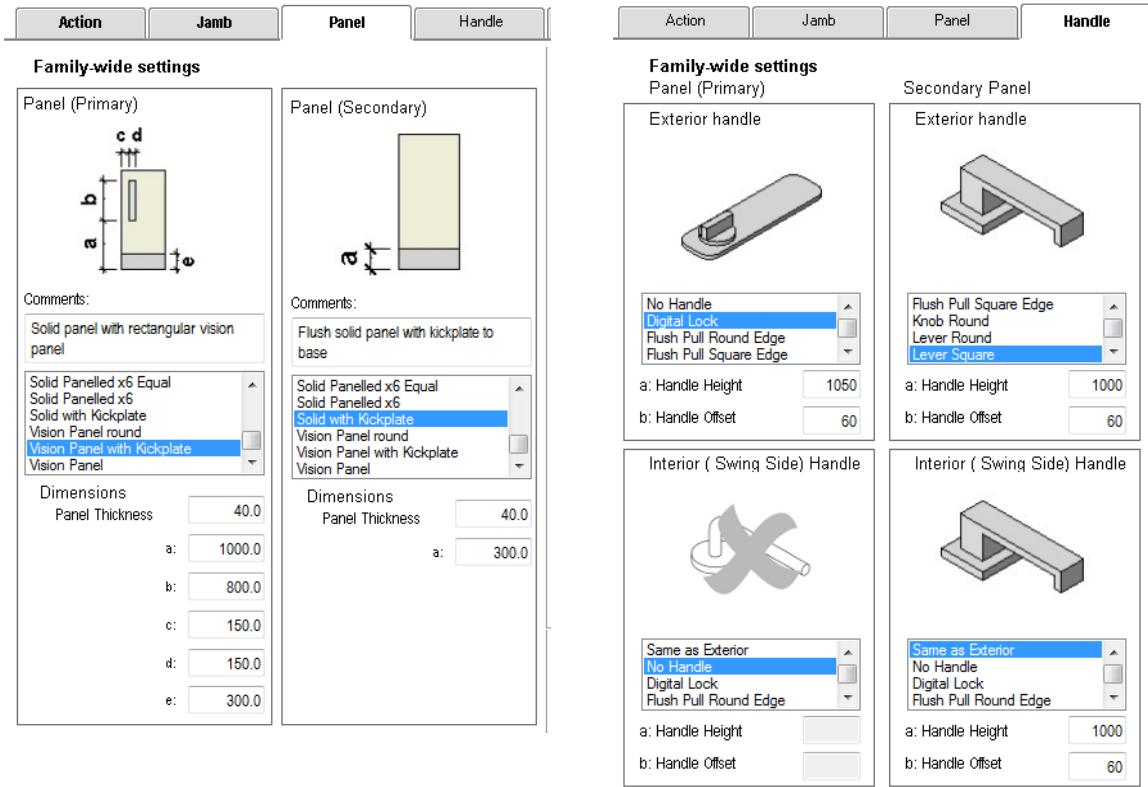
## Jamb Types added:

All doors are now available with wrapping jambs (ie: Jambs that wrap the wall)



## Double Door Panels:

All double doors (Hinge, Hatch, Pivot and 1 + 1 sliding doors) can now have different panels and handles to each leaf:

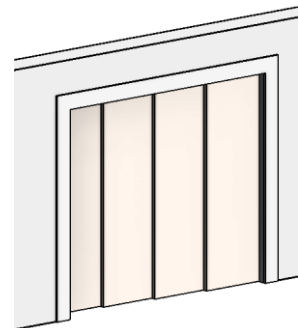
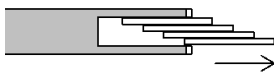
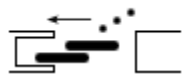


### Actions added:

(Ships with 44 different door actions)

The Door Factory ships with the following *extra* action:

Multi Pocket Slider (with a user-adjustable "No. of Panels" parameter)



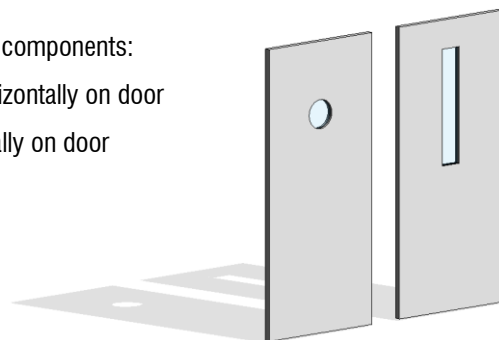
### Components added:

(Ships with 18 different panels, 11 handles, 11 trims and 13 user components, all of them customisable and you can still add your own)

The Door Factory ships with the following *extra* components:

Panels: Vision Panel (rectangular) centred horizontally on door

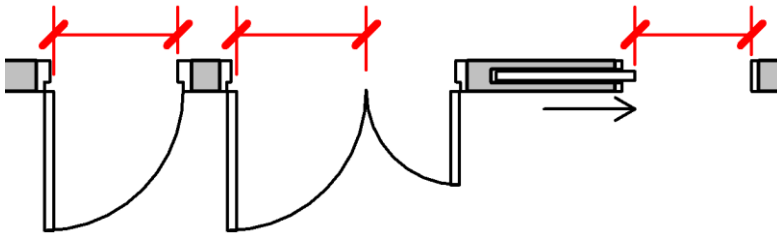
Vision Panel (round) centred horizontally on door



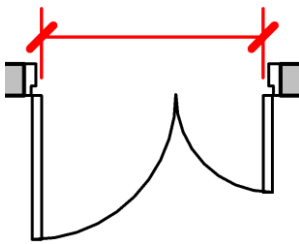
**Parameters added:**

The Door Factory now creates doors with the following additional parameters:

Single and Double Doors: **Clear Opening Width**

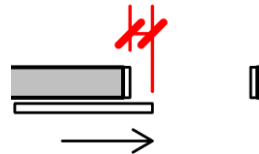


Double Doors: **Clear Overall Opening Width**



Sliding Doors: **Panel Protrusion into Opening**

(when the door is 100% open)



**Parameter amendments:**

All the doors major dimension parameters are now editable in the final family including Panel Thickness, Structural Tolerance and Jamb Dimensions (including Doorstop Width).

Door furniture material parameters are now type based.

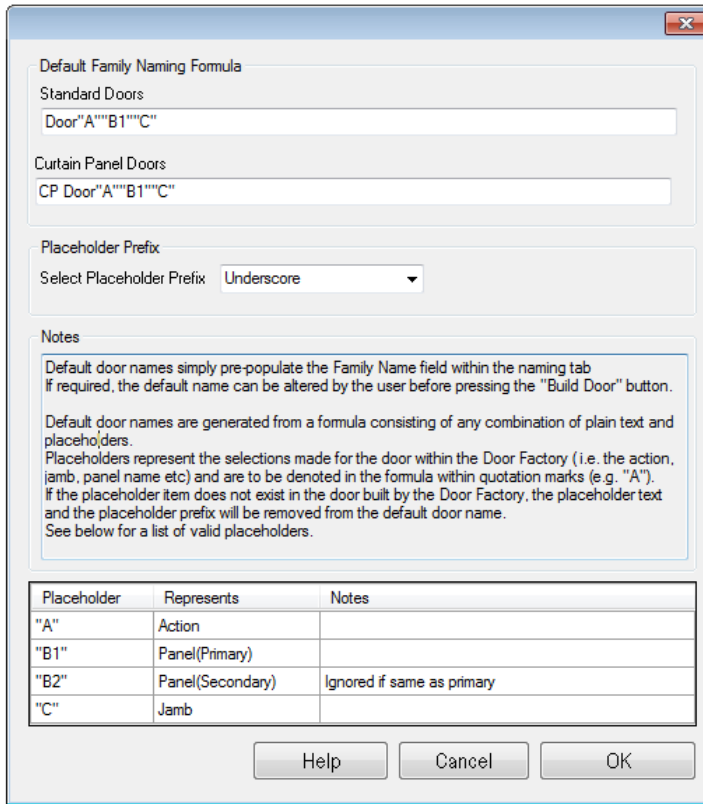
**Parameter Default Values:**

One can now set different Panel Tolerances for either side of the door within the Default Values to allow for further accuracy within the door creation without having to change the tolerances from within the Panel Tab (i.e. Generally the Panel to Jamb Gap at the hinge side of the door is different than the Panel to Jamb Gap at the latch side of the door)

Default Values		
<input checked="" type="radio"/> Metric (millimeters) <input type="radio"/> Imperial ( decimal inches)		
Panel Height	1980	For all doors
Panel Thickness		The default value is read from the panel's family
<b>TOLERANCES</b>		
Structural Tolerance	10	For all doors with jambs
Panel to Head Gap	1	For all doors with jambs except for surface sliding doors
Panel to Doorstop Gap	0	For doors with rebated and stop jambs
Panel to Base Gap	5	For all doors
Panel to Jamb Gap Side1	5	For doors with jambs; at latch (or opening) end
Panel to Jamb Gap Side2	1	For doors with jambs; at hinge (or closed) end
Panel to Wall Gap Side1	10	For doors without jambs; at latch (or opening) end
Panel to Wall Gap Side2	10	For doors without jambs; at hinge (or closed) end
Panel to Panel Gap	1	For doors with panels butting against each other
Panel to Head Lap	25	For sliding doors
Panel to Jamb Lap Side1	25	For sliding doors with jambs; at latch (or opening) end
Panel to Jamb Lap Side2	25	For sliding doors with jambs; at hinge (or closed) end
Panel to Wall Lap Side1	25	For sliding doors without jambs; at latch (or opening) end
Panel to Wall Lap Side2	25	For sliding doors without jambs; at hinge (or closed) end
Panel to Panel Lap	50	For sliding doors with overlapping panels
Panel to Panel Offset	10	For sliding doors with overlapping panels
<b>HANDLE</b>		
Handle Height	1000	For all doors with handles
Handle Offset	60	For all doors with handles

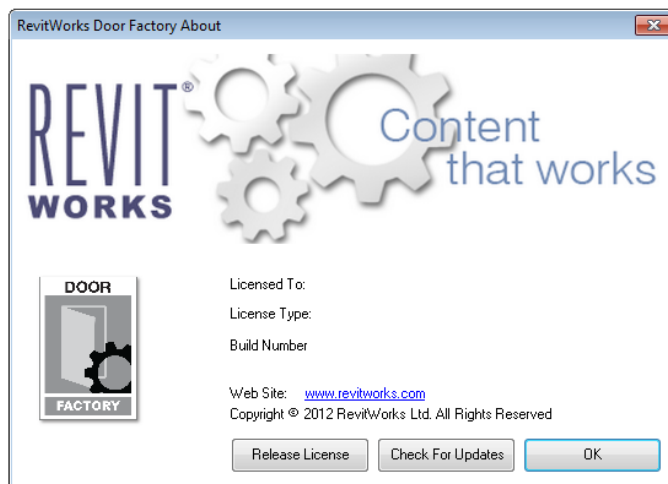
### Default Naming:

The Door Factory now allows you to setup default names. This default pre-populates the name of the door in the Name tab.



### About:

An About button is now available within the Start Tab, allowing one to check for updates (the Release License button is now within here).





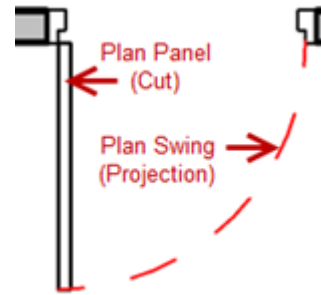
## New Features introduced for Revit 2014 & V2.1 (for Revit 2013)

### Symbolic Plan Graphics:

The symbolic line work for the panel within plan views is now on its own sub-category "Plan Panel (Cut)" to allow the panel to be shown differently than the swing.

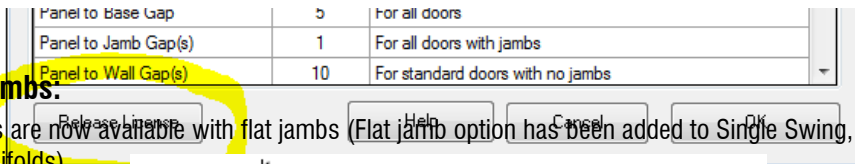
In previous versions the symbolic line work for the panel was on sub-category "Plan Swing (Cut)" and the swing line was on "Plan Swing (Projection)". This allowed the panel and swing to have different Line Weights but they had the same Line Colour and Line Pattern. Now the Door Factory has an independent graphical control for both the Panel and Swing that can be defined for all plan views within Object Styles rather than having to use a View Override or View Template.

Category	Line Weight		Line Color	Line Pattern
	Projection	Cut		
Doors	1	2	Black	Solid
Arrow	1	1	Black	Solid
Cill Components	1	1	Black	Solid
Elevation Swing	1	1	Black	Centre
Frame/Mullion	1	2	Black	Solid
Furniture	1	1	Black	Solid
Glass	1	2	Black	Solid
Hidden Lines	2	2	Blue	Dash
Jamb	1	1	Black	Solid
Opening	1	3	Black	Solid
Panel	1	2	Black	Solid
Plan Panel	1	2	Black	Solid
Plan Swing	1	1	Red	Dash
Trim	1	1	Black	Solid



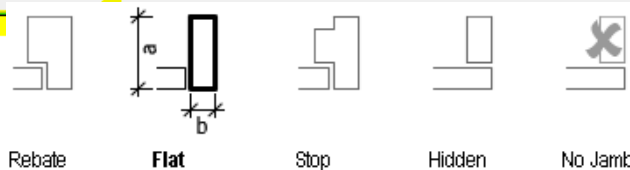
### Release License:

A Release License button is now available within the Default Setting dialogue box, allowing one to easily move the licence key to another PC (please note that an Internet connection is required).



### Flat Jamb:

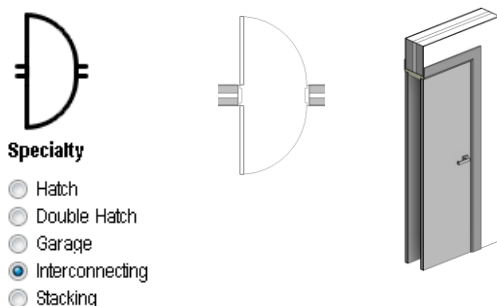
All doors are now available with flat jombs (Flat jamb option has been added to Single Swing, Double Swing, Hatch, Double Hatch and all Bi-folds)



### Actions added: (Ships with 43 different door actions)

The Door Factory ships with the following *extra* action:

Interconnecting door (i.e. Used for interconnecting hotel rooms)



## New Features introduced for Revit 2013

The RevitWorks Door Factory has had a makeover. There are more door configurations, options and components and features an improved graphical interface.

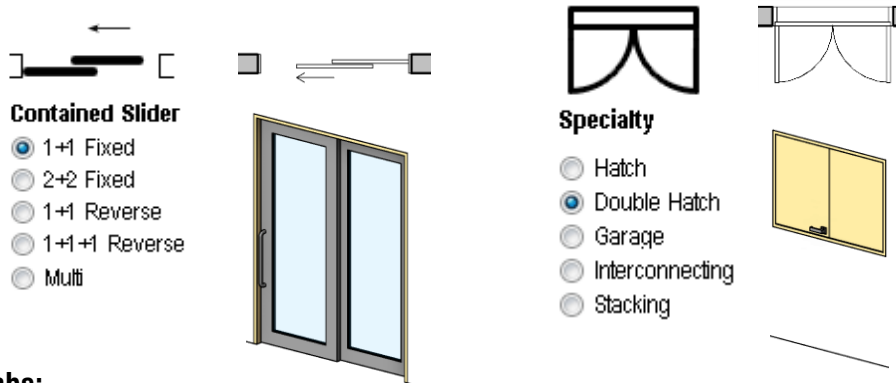
*Please note: User components from version 1 are incompatible with version 2. If you need help converting them to version 2, please email us at [support@revitworks.com](mailto:support@revitworks.com).*

**Actions added:** (Ships with 42 different door actions)

The Door Factory ships with the following *extra* actions:

Contained sliders: 1+1 Fixed, 2+2 Fixed (i.e. the end panel is fixed) and Multi

Single and Double door hatches (i.e. jambs and trims to all 4 sides)



### Stop Jambs:

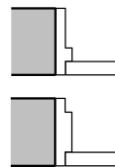
All doors with stop jambs can now have the doorstop depth centred on the jamb (compared to having it as a specified depth)

**Type parameters**

Other

Doorstop Depth Centred on Jamb

Unlink to force Doorstop Depth to use the Doorstop Depth Specified parameter (d)



### Opposing Swings:

Double Swing and Pivot 2-way Doors can now have Opposing Swings

**Type parameters**

Graphics

- Curved Plan Swing
- Straight Plan Swing



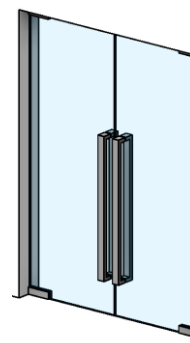
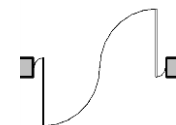
1 Way Swing



Standard 2 Way Swing

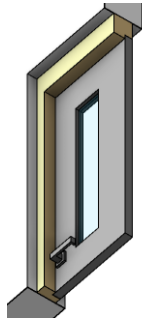


Opposing 2 Way Swing



### Jamb Head Width:

All doors can now have the jamb width to the head of the door specified separately from the jamb width to the sides of the door (defaults to be the same)



#### Type parameters

Other

- Jamb Head to match Jamb Width (b) Untick to force Jamb Head to use the Jamb Head Specified (e) parameter

**Extra Components:** (Ships with 16 different panels, 11 handles, 11 trims and 13 user components, all of them customisable and you can still add your own)

The Door Factory ships with the following *extra* components:

- Panels: Solid with x6 variable panels
- Solid with x6 equal panels

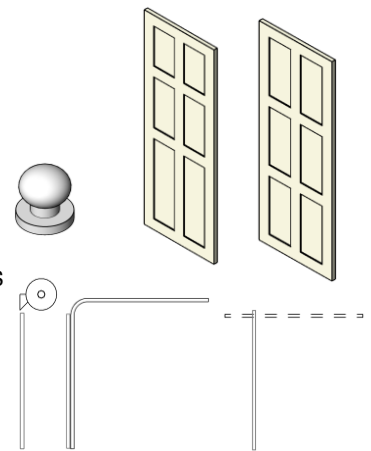
Handles: Round Knob

User Components:

Garage roller, roll-up and tilt-up doors: symbolic plans and sections

Overpanel

Decorative Mouldings (Interior, Exterior and both)



### Curtain Panel Doors with User Components:

User components are now available for curtain panel doors.