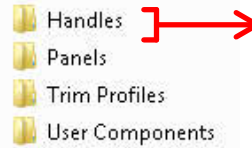


# Door Factory 2023 - Create New Handles

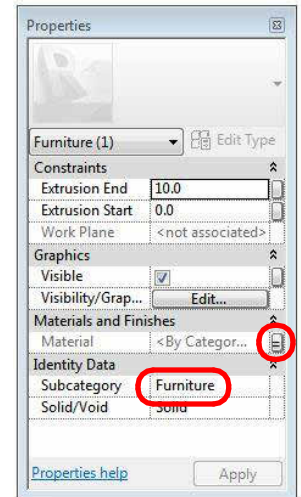
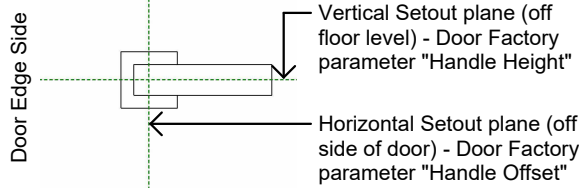
## 01 Open an Existing RevitWorks Handle

- Go to the Door Factory component installation directory, sub folder "Handles".
- Default path: C:\Program Data\RevitWorks\Door Factory 2023\Components ("Metric" or "Imperial")
- Open an existing handle, as close to the one you want to create.



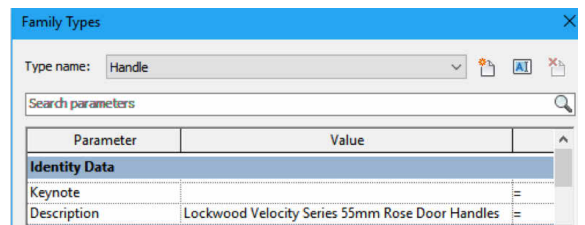
## 02 Model New Handle

- When modelling the handle, consider the Floor Plan: Ref Level view to be the same as the door panel elevation: the handles are workplane based families so when the handle is placed as a nested component, the Ref.Level workplane is mapped onto the correct surface of the host model (ie: the face of the door panel).
- Do not work in (or change) 3d view:Preview. This is preset for generating the preview icon.
- Modify the existing extrusions and voids etc and edit to create desired handle or delete and start again.
- The handle should be a static model that does not flex: do not use length parameters.
- Do not create new types, or rename the family type name "Handles"
- Ensure relationship to setout planes are retained correctly.
- Ensure orientation is as desired.
- Ensure all modelled elements have subcategory 'Furniture'
- Ensure all modelled elements materials are linked through to "Furniture Material"



## 04 Fill in the Description

- Open the Family Types dialog (*modify/family types*)
- Fill in the handles specification into the description parameter - this will pre-populate the Door Factory with this specification, and then automatically fill in the 'Handle Type' specification parameters within the final door.
- If left blank, the Door Factory will be prepopulated with the name of the panel instead.

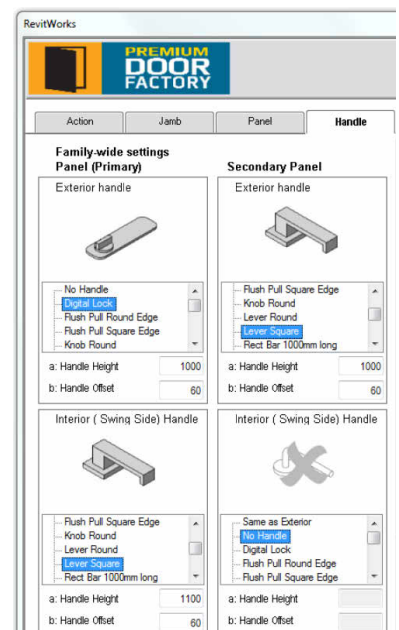


## 03 Saves "Handle\_..."

- "Saves" new handle into the "Handles" directory and give it a new name, starting with "Handle\_".

### Important Notes

- **Do not add more family types, or change the family type name "Handle".**
- **Handle name MUST begin with "Handle\_".**
- Do not use any length parameters. If different lengths are required, create a new handle with a different length and name appropriately.
- Handles never show in the plan view. If you don't want them to show in 3d views or elevations at different detail levels, select the modelled elements and change under visibility settings..
- Do not delete the copyright parameter, the Door Factory requires this to know that this is a Door Factory component.
- 3d view "Preview" is used by the Door Factory for the handles icon, so please leave as-is.



## 04 Run the Door Factory

- Your new handle will now be selectable under the "Handle" tab, including the 3d preview icon and the specification item.