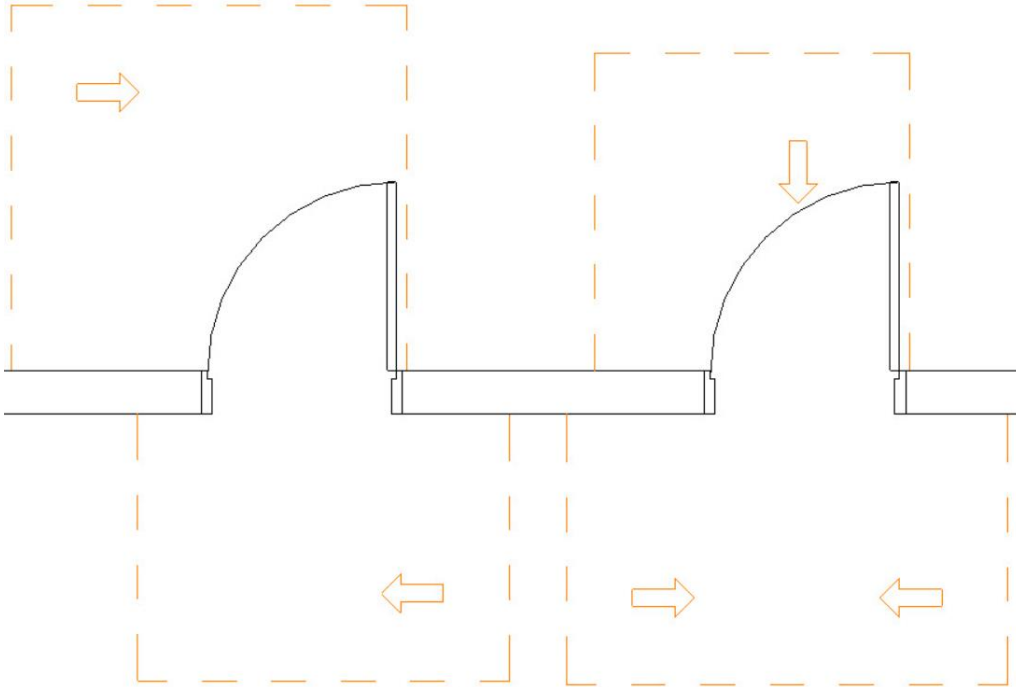


RevitWorks Door Factory: Clearance Diagrams

Using clearance diagrams within the RevitWorks Door Factory 2026 onwards.



PLEASE READ:

While we have done our best to ensure the clearance diagrams we have created follow the specified standards, RevitWorks Ltd expressly disclaims any warranty for this content.

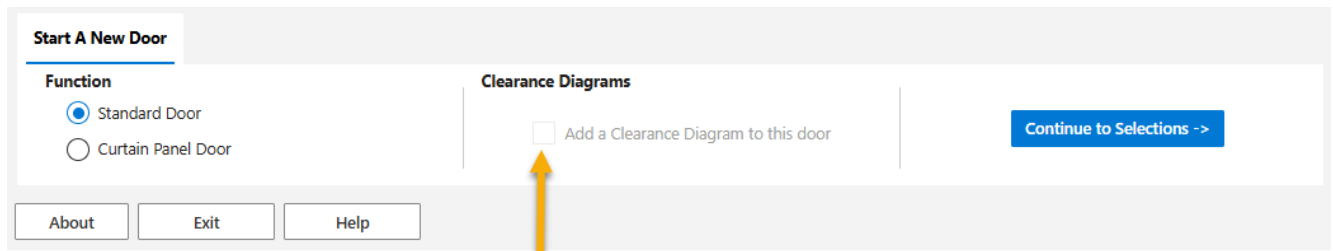
This content is provided “As Is” without any express or implied warranty of any kind.

Contents

RevitWorks Door Factory: Clearance Diagrams	1
PLEASE READ:	1
Setting up Clearance Diagrams:	2
Using Clearance Diagrams within your project:	2
Clearance Diagram Collateral:	3
ICC A117.1-2017	3
ADA 2010	4
AS1428.1 (2009)	5

Setting up Clearance Diagrams:

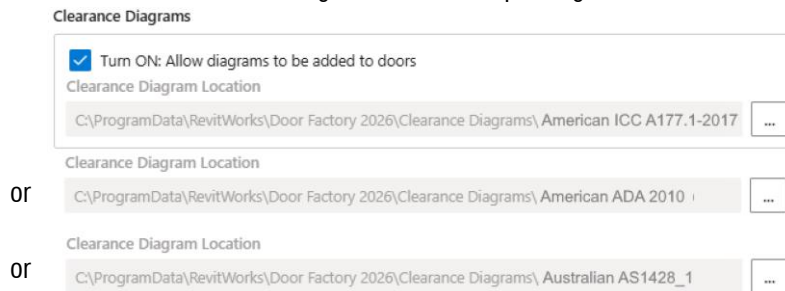
When the Door Factory has been installed, the “Add a Clearance Diagram...” button will be greyed out and un-tickable



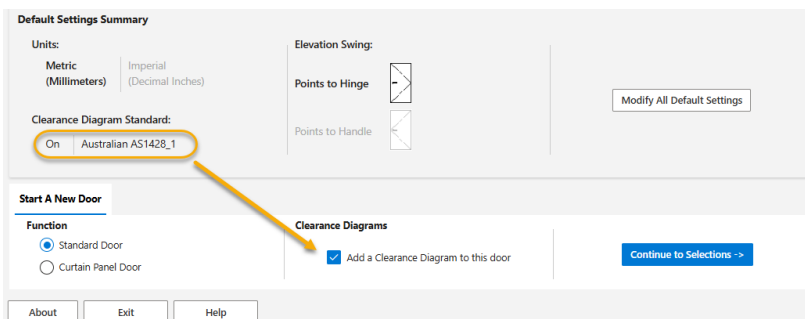
Cannot tick this box until the clearance diagrams have been setup

This ensures the correct clearance diagram standard is selected before they can be added to the door. To setup, go to the Door Factory “Default Settings” and:

1. Click the “Turn ON:” checkbox
2. Ensure that the “Clearance Diagram Location” is pointing to the correct clearance diagram directory



Once this has been done, the “Add clearance diagrams” button will be tickable and the standard used will be shown

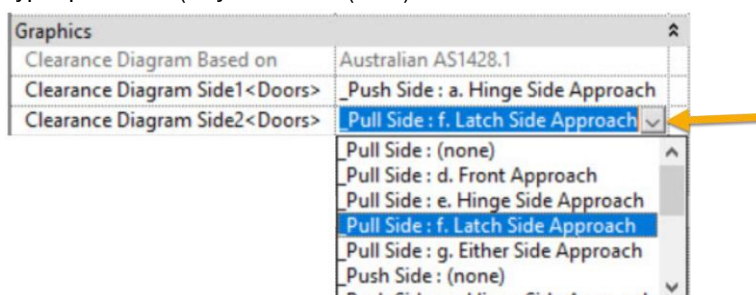


Using Clearance Diagrams within your project:

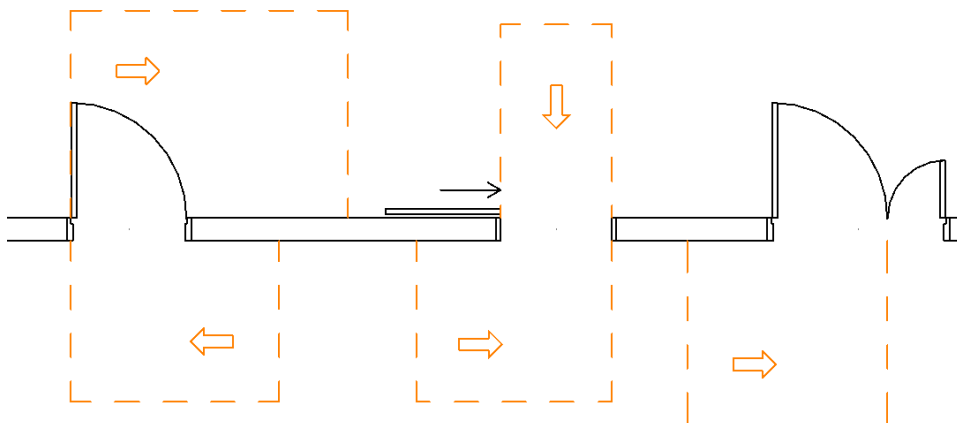
If the “Add clearance diagrams” button is ticked as per the previous page, clearance diagrams will be added to the following doors as you make them:

Single swing Single Swing 2way Double Swing Double wing 2 Way Single Pivot Double Pivot
Surface Slider 1+0 and 1+1 Pocket Slider 1+0 and 1+1 Contained Slider 1+1 Fixed

They are accessible within the instance parameters of the “Graphics” grouping for the door used within your project as a pull-down “family-type” parameter (they default to “(none)”.



It's then up to the user to make a valid choice for both sides of the door to suit the direction of travel. Once done, they will show up as expected in plans.



Using “Family Type” pulldown parameters:

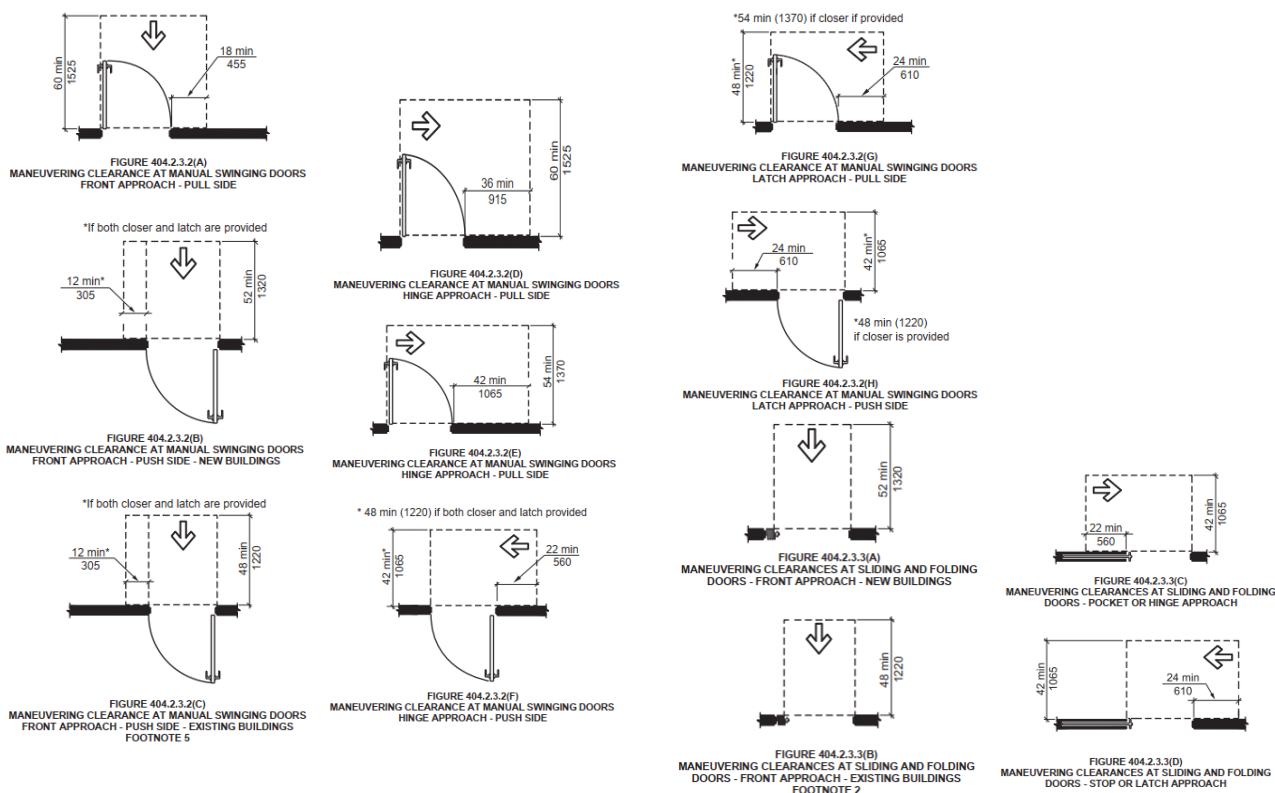
Due to how Revit handles pull-down type selector parameters, any nested door families or shared door components in the project may appear in the clearance diagram drop-downs. Selecting these will not work as intended—only use the designated clearance diagram families. Use with care.

Clearance Diagram Collateral:

The following diagrams are what the RevitWorks clearance diagrams are based on.

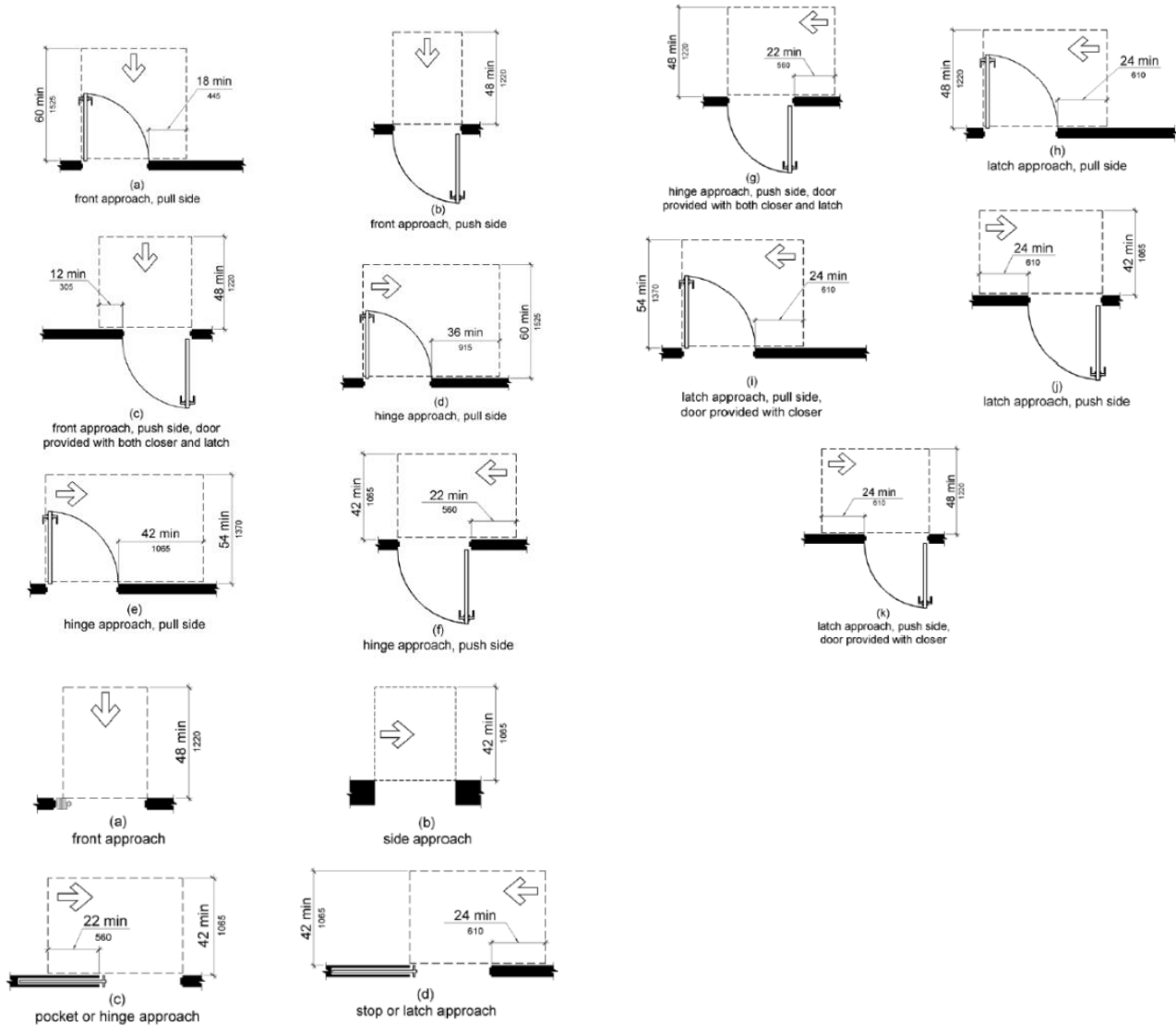
It is up to you, the end user, to ensure they are relevant for your jurisdiction and project. This content is provided “As Is” without any express or implied warranty of any kind.

ICC A117.1-2017



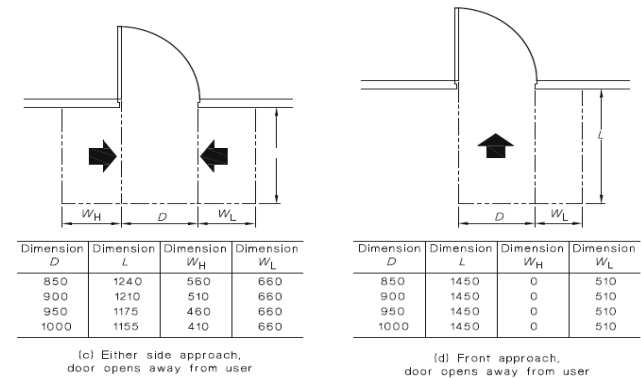
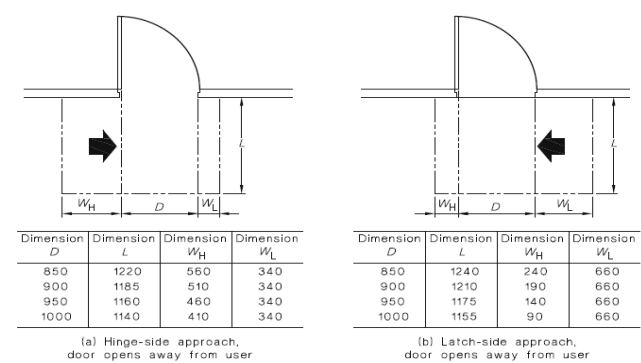
(continues next page)

ADA 2010



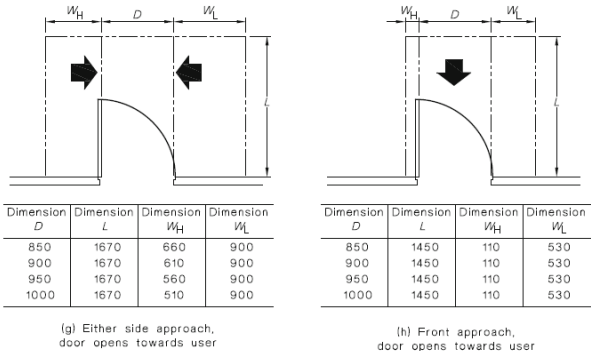
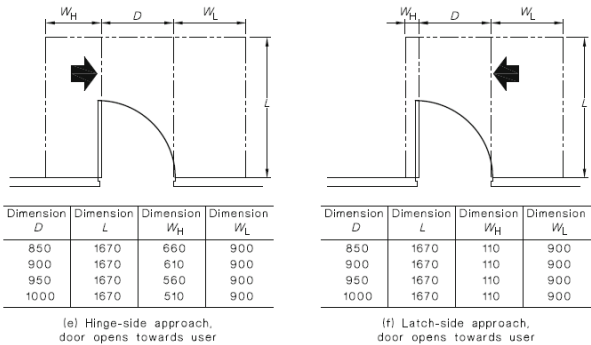
(continues next page)

AS1428.1 (2009)



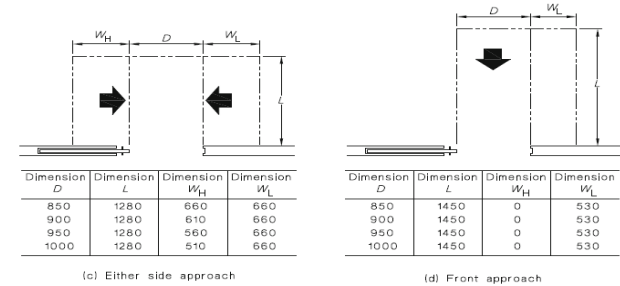
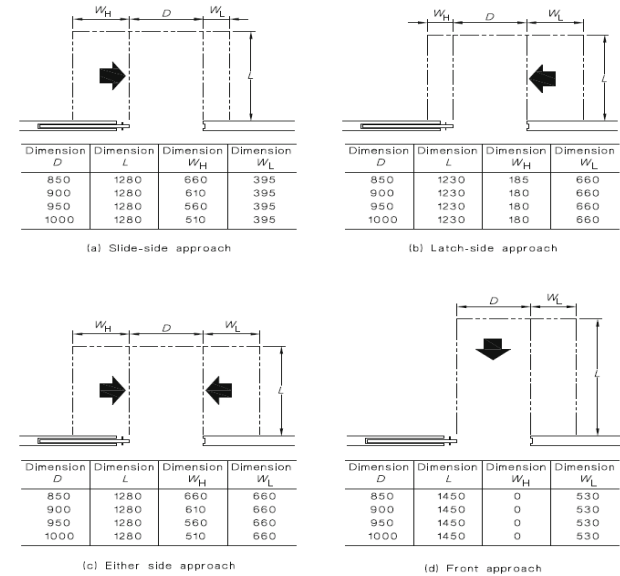
LEGEND:
D = Clear opening of width of doorway
L = Length
WH = Width—hinge side
WL = Width—latch side
➡ = Direction of approach
--- = Circulation space

DIMENSIONS IN MILLIMETRES



LEGEND:
D = Clear opening of width of doorway
L = Length
WH = Width—hinge side
WL = Width—latch side
➡ = Direction of approach
--- = Circulation space

DIMENSIONS IN MILLIMETRES



LEGEND:
D = Clear opening of width of doorway
L = Length
WH = Width—hinge side
WL = Width—latch side
➡ = Direction of approach
--- = Circulation space

DIMENSIONS IN MILLIMETRES

(end of document)