

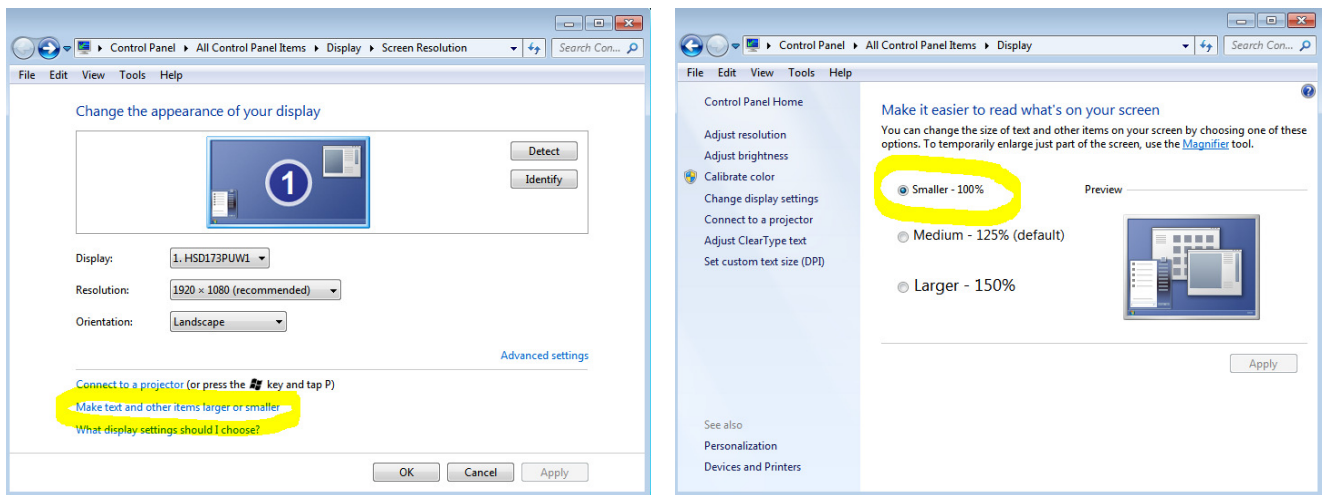
Door Factory: Display Requirements

The RevitWorks Door Factory requires the Microsoft Windows display font sizes to be set to certain standard sizes to display properly.

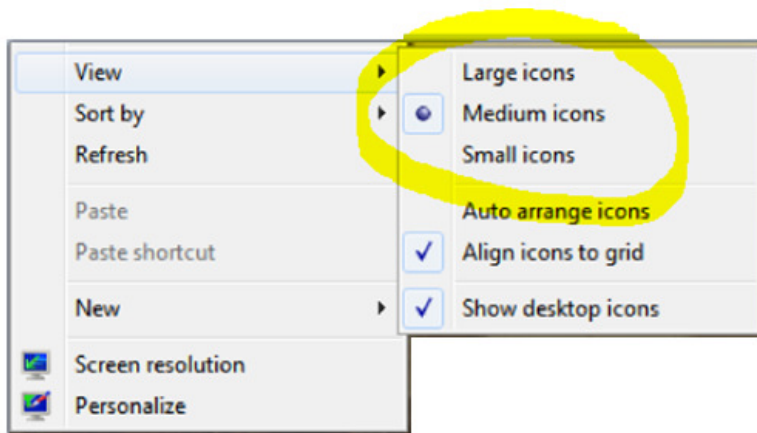
Please follow instructions as shown as below (and on the following pages for different versions of Microsoft Windows) to check or change your font sizes:

Windows 7

The Door Factory requires Microsoft Windows 7 display font sizes to be set at 100% (the “Smaller” option). To change, go to your Control Panel/Display Settings and change as below:

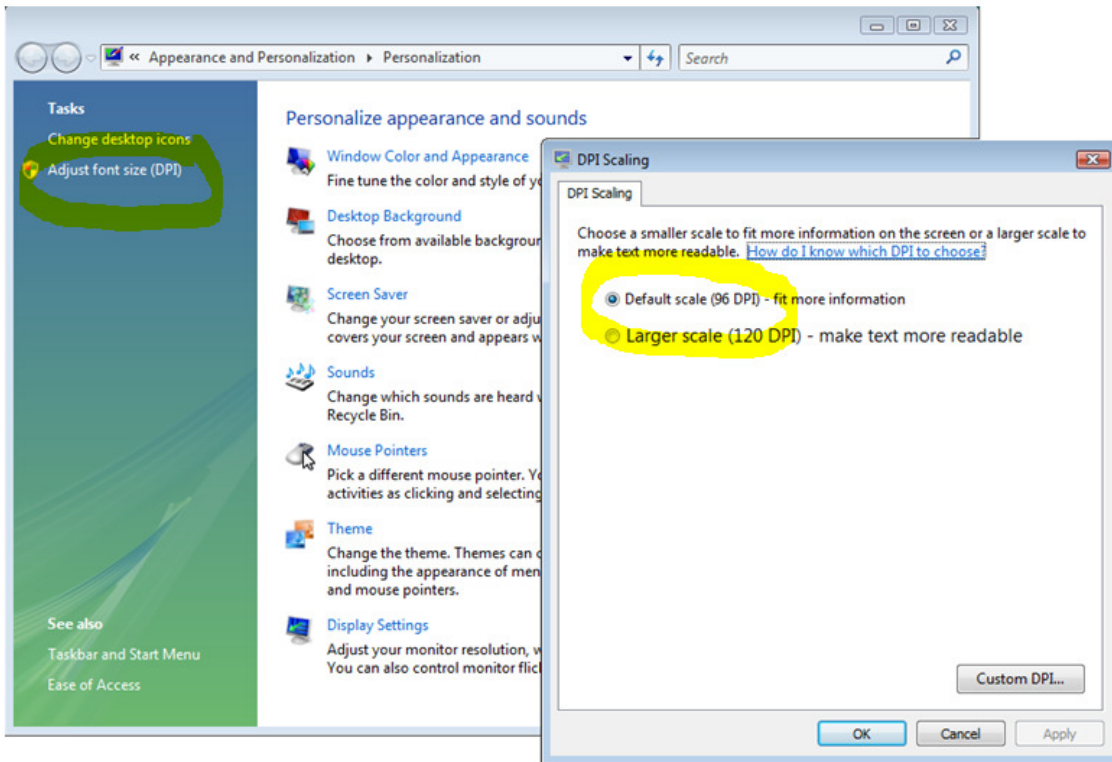


This setting does not mean that your desktop icons need to be small; you can change the size of those by right-clicking on your desktop and changing the icon size there.



Windows Vista

The Door Factory requires Microsoft Windows Vista display font sizes to be set to 96 dpi (the Default scale). To change, go to your Control Panel/Personalisation Settings and change as below:



Windows XP

The Door Factory requires Microsoft Windows XP display font sizes to be set to "Normal". To change, go to your Control Panel/Display Properties "Appearance" tab and change as below:

